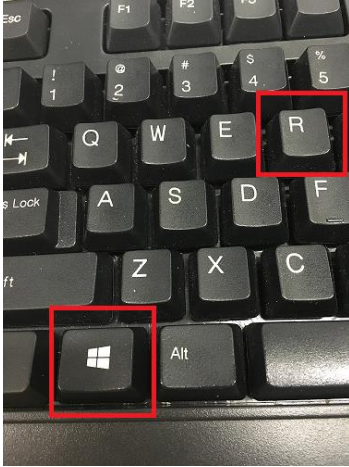
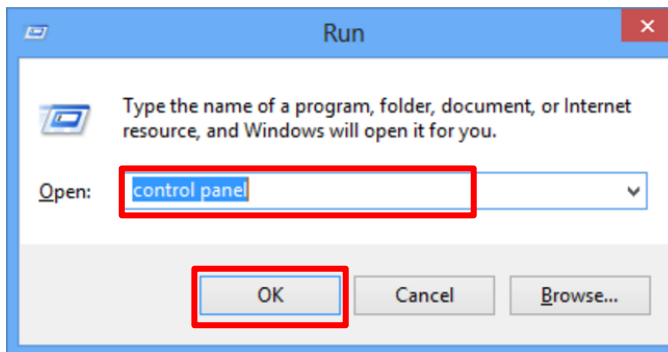


How to Enable TLS 1.2 (For Win8)

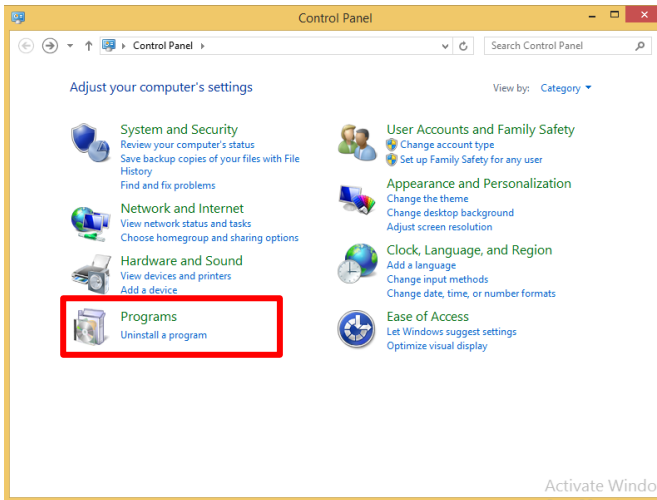
1. Press the **“Windows”** and **“R”** buttons simultaneously to open the **“Run”** dialogue box.



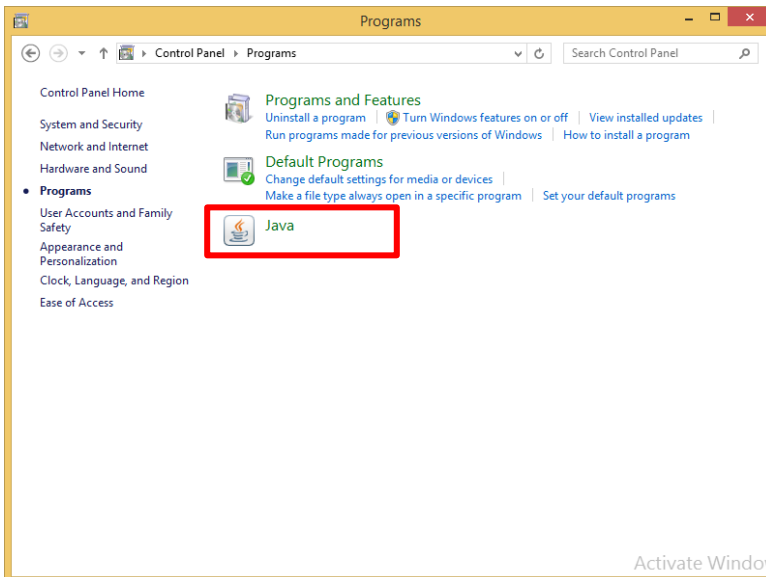
2. Type in **“control panel”** and click **“OK”**.



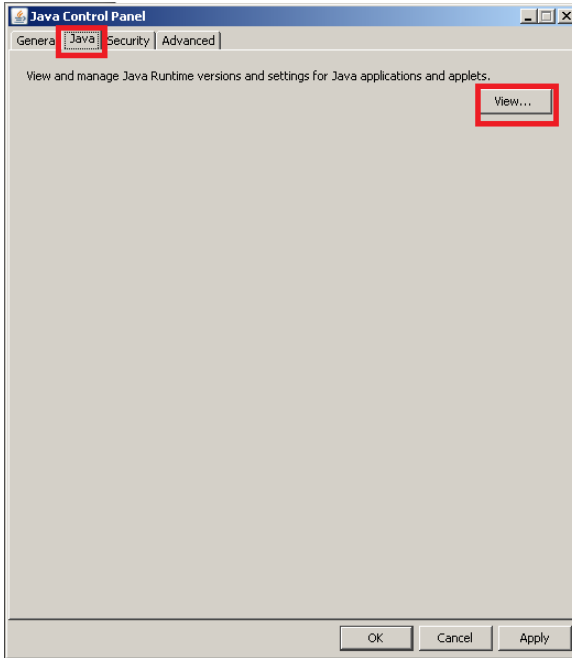
3. Click **“Programs”** in the **“Control Panel”**.



4. Click **“Java”**.

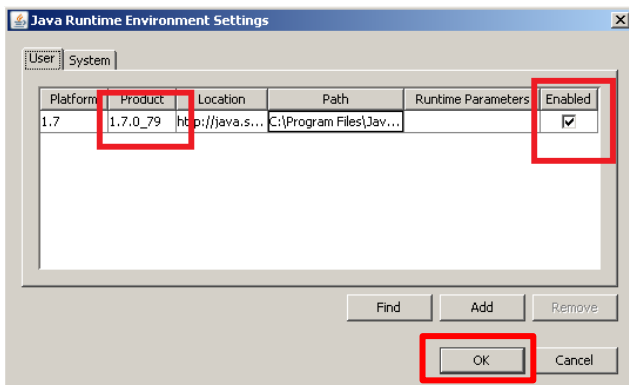


5. Click “Java”, then “View...”.

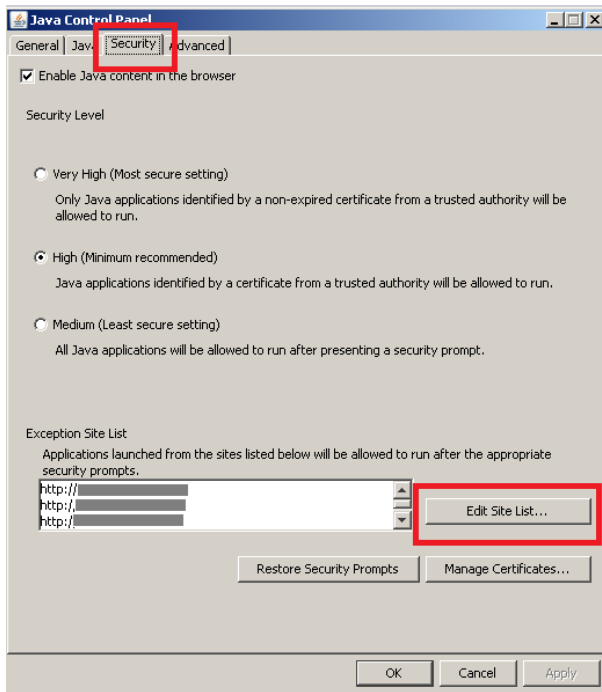


6. Make sure that:
- Java version is 1.7.0_51 or above
 - The “Enabled” box is ticked

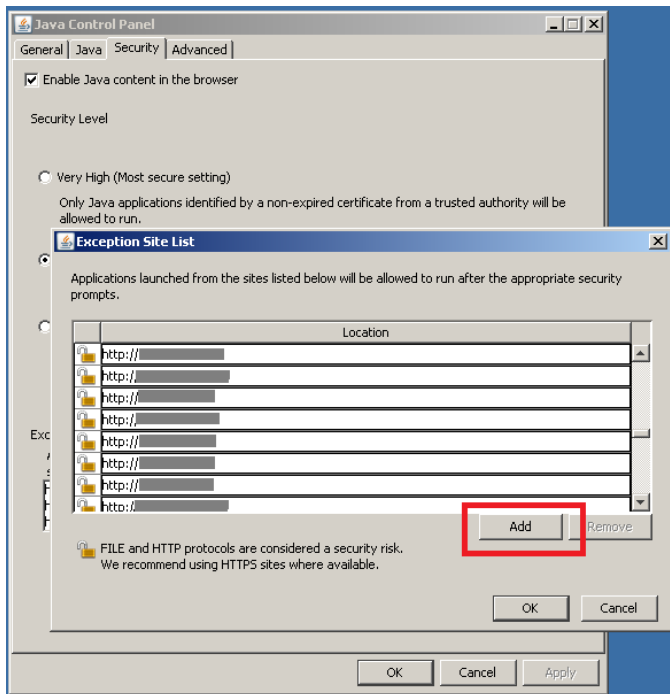
Then, click “OK”.



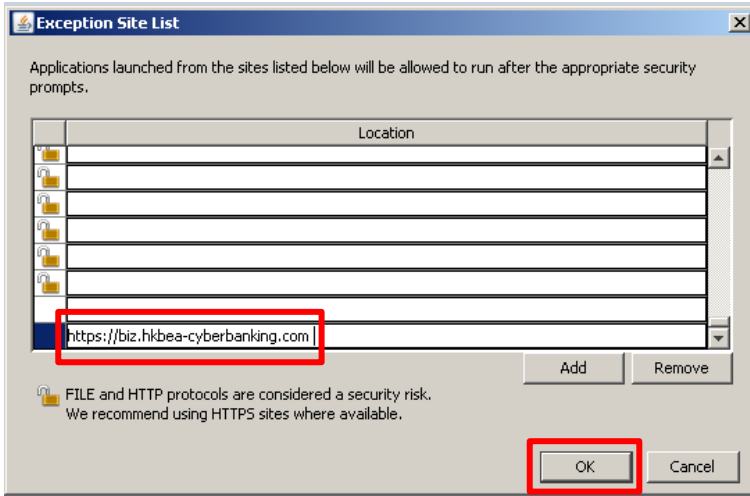
7. Select “Security”, “Edit Site List...”.



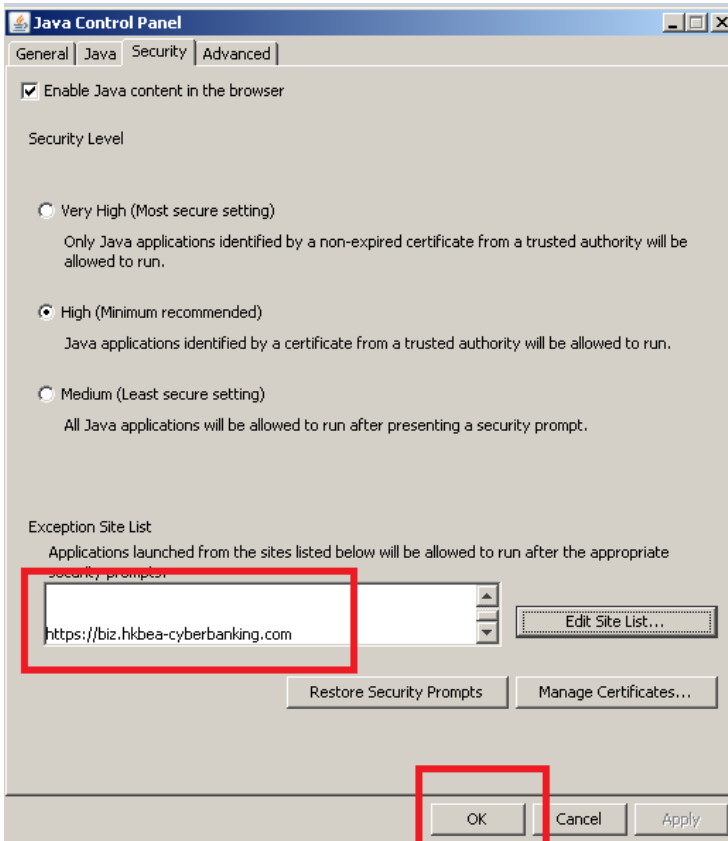
8. Click “Add”.



9. Add “<https://biz.hkbea-cyberbanking.com>” to “Location” and click “OK”.



10. The domain will be listed in the “Exception Site List”. Now click “OK”.



11. Select “**Advanced**”, enable “**Use TLS 1.2**”, then click “**OK**”.

