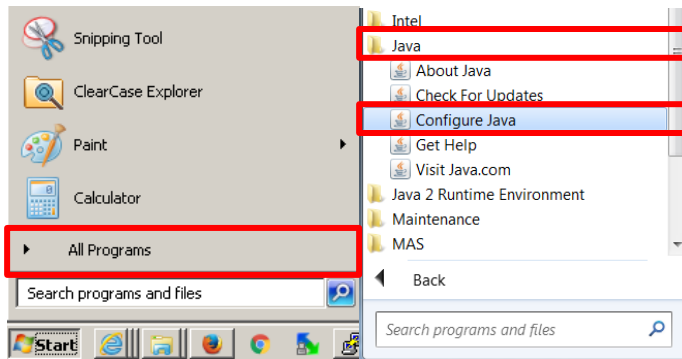
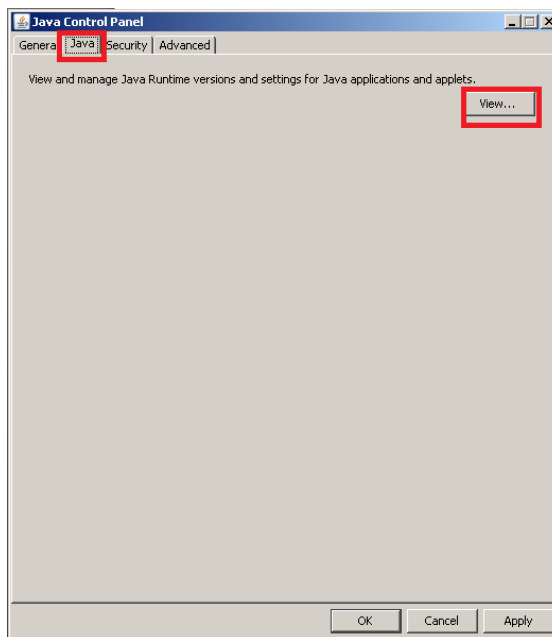


## How to Enable TLS 1.2 (For Win7)

1. Click **“Start”**, select **“All Programs”**, **“Java”**, **“Configure Java”**.

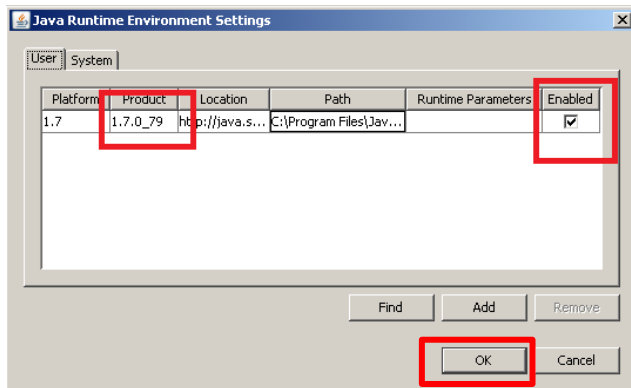


2. Click **“Java”**, then **“View...”**.

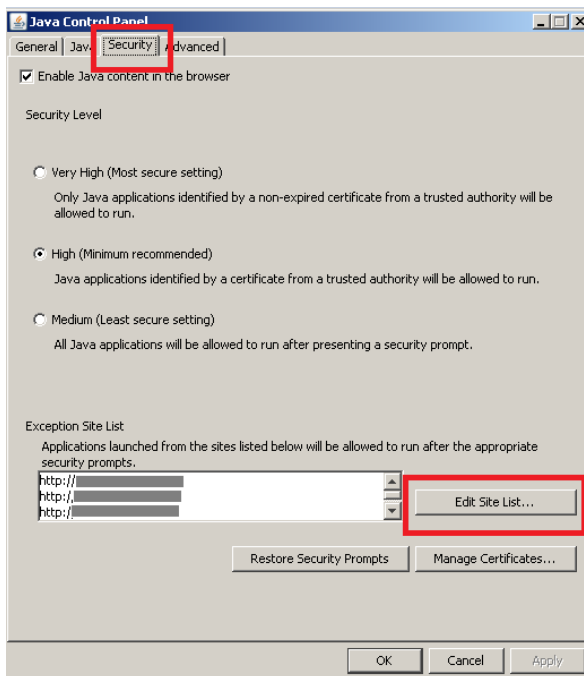


3. Make sure that:
- Java version is 1.7.0\_51 or above
  - The **“Enabled”** box is ticked

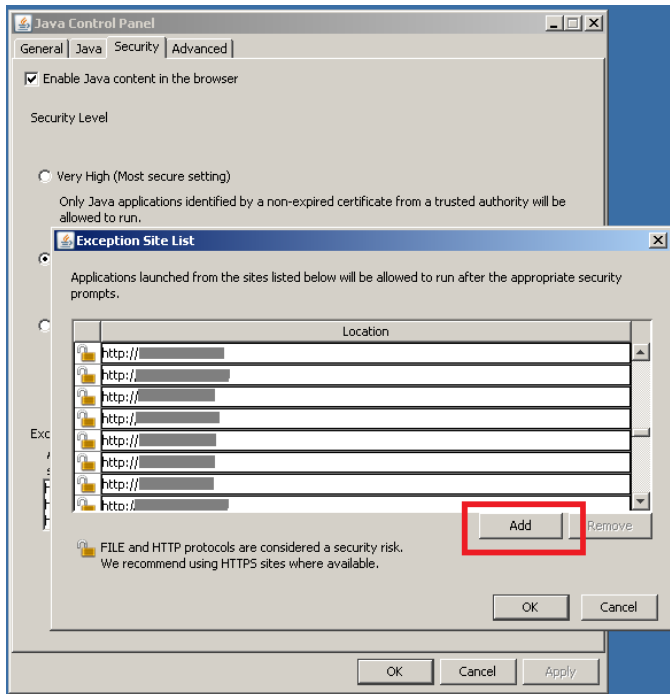
Then, click **“OK”**.



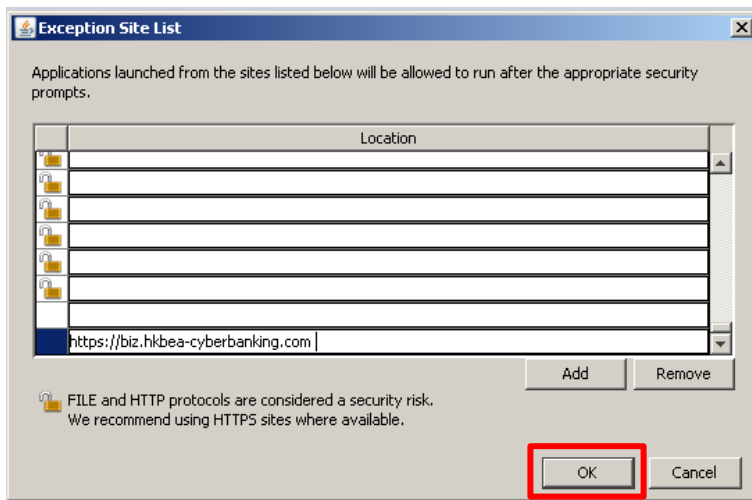
4. Select **“Security”**, **“Edit Site List...”**.



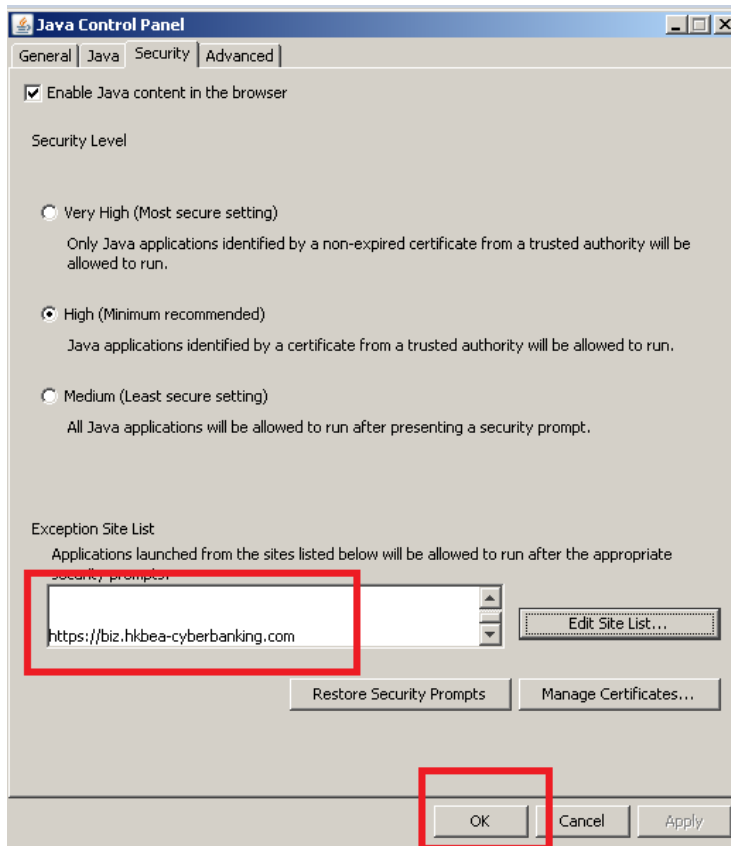
5. Click **“Add”**.



6. Add **“https://biz.hkbea-cyberbanking.com”** to **“Location”** and click **“OK”**.



7. The domain will be listed in the “**Exception Site List**”. Now click “**OK**”.



8. Select **“Advanced”**, enable **“Use TLS 1.2”**, then click **“OK”**.

